



“Best Bargain In Farming”

Our new “Encyclopedia of Made It Myself Ideas -Volume II” features the best farmer-built ideas from the 2005 to 2010 issues of FARM SHOW. Even if you’ve saved all your past issues, all stories in this book are indexed and cross-referenced to make them easy to find. This 482-page book features more than 1,200 best ideas from our readers. One enthusiastic reader told us it’s the “best bargain in farming”. Sells for just \$14.95 (\$18.95Can.) plus \$4.95 S&H (just one shipping charge no matter how many books you order). Makes a great gift!



Couler kit includes 18-in. 13-wave boron “earthenhardened” couler blades, (left). Kit, (right), is now fitted with 4 bearings to make it even more heavy-duty. Works in wheat stubble and corn stalks. Cuts up trash so you can plant days earlier.



Change A Chisel Plow Into A Couler Machine

Couler kits from Ron’s Manufacturing convert any chisel plow to a year-round tool to prepare your fields. In the fall, it can be used to lightly till the soil and incorporate and size residue, setting the stage for the spring planting season. It is also a practical way to dry out wet soils. The Vertical Tillage Couler Kit Attachment works well in no-till conservation tillage, as well as conventional tillage operations. The Vertical Tillage Couler Kit Attachment allows for shallow seedbed preparation, which decreases the risk of excess soil density below the root zone.

The Vertical Tillage Couler Kit Attachment is also an excellent addition to spring residue management. It increases planting efficiency, offers maximum yield potential, and performs well in all residue conditions. sizing and disturbance.

The Couler Kit can be fitted with a wide selection of couler blades, spaced on 6-in. centers.

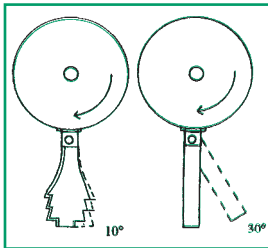
For more information, call Ron’s Manufacturing, 40582 187th St., Carpenter, S.Dak. 57322 (ph 605 266-2177; email: info@ronsmfg.com; www.ronsmfg.com).

Reader Inquiry No. 175

Performance-Boosting Combine Products

Deere Chopper Knives - If you’re not satisfied with the job done by the straw chopper on your Deere combine, contact Robert Rottinghaus.

Rottinghaus, owner of Clever Tech, Inc., Jesup, Iowa, says the rotor knives on Deere straw choppers aren’t heavy enough to handle heavy straw or wet,



Deere Chopper Knives

green bean stems. “Many modern soybean varieties produce dry beans on green stems, which can cause problems for combines and straw choppers. Since the original knives in the Deere chopper pivot back about 30 degrees, when they hit this tough material they let it pass over the stationary knives uncut,” he says.



To solve the problem, he developed a heavier knife that will fit most Deere straw

choppers. Made of grade 80 steel that’s been laser cut, the Clever Tech knife has four sharp rake teeth on it, to make a serrated edge. It’s designed to pivot only 10 degrees, so it forces material through the stationary knives until everything is cut.

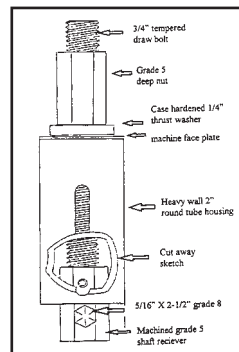
Rottinghaus’ combine straw chopper knives sell for \$7.87 each (plus S&H), depending on the model. All knives are weighed and balanced before shipping.

Reader Inquiry No. 176

Stalk Roll Bearing Puller For Case IH 1000 Cornheads - Save time with this unique

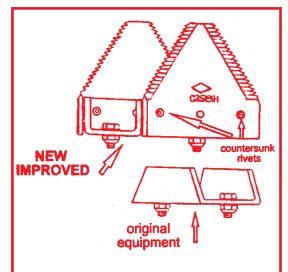
puller for stalk roll bearings on 1000 Series Case IH corn heads. Powder-coated with red Case IH paint, it has a heavy-duty puller cage.

Sells for \$104 fob Jesup, Iowa. Weighs 3 lbs. Comes with a 2-year warranty.



Reader Inquiry No. 177

Straw Chopper Knife Kit - Gives versatile unmatched chopping capability on Case-IH combines. Cuts the straw and stubble shorter which turns to mulch quicker for faster available plant food and nutrients for the next crop. Sells for \$133 plus S&H.



IH Chopper Knives

Reader Inquiry No. 178

Contact: FARM SHOW Followup, Clever-Tech, Inc., 4121 South Canfield Road, Jesup, Iowa 50648 (ph 319 827-1311; fax 2425).